

# **The House on Mango Street**

and digital media literacy

---

November 2021





## OUR ESSENTIAL QUESTIONS

### unit

How do we relate the development of the characters in literature to our own identity development over time?

How does it impact our understanding of the text and the world around us?

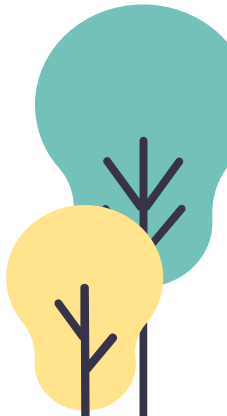
### lesson

How can we use social media profiles portray and reflect our understanding of character identities?



## TODAY'S AGENDA

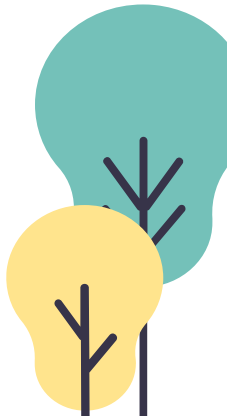
- **Establish context**
- **Create a character profile**
- **Rotate & respond**
- **Wrap up**





## Context: Let's start thinking like the characters

- What **age** do we think Esperanza is?
- **When** do you think these stories took place?
- Do you think they had **cell phones**?
- **Where** did this story take place? Country ? City ?
- Do you know someone like **Esperanza**? In what way?



## CHARACTER ASSIGNMENTS & SOURCES

**Esperanza**

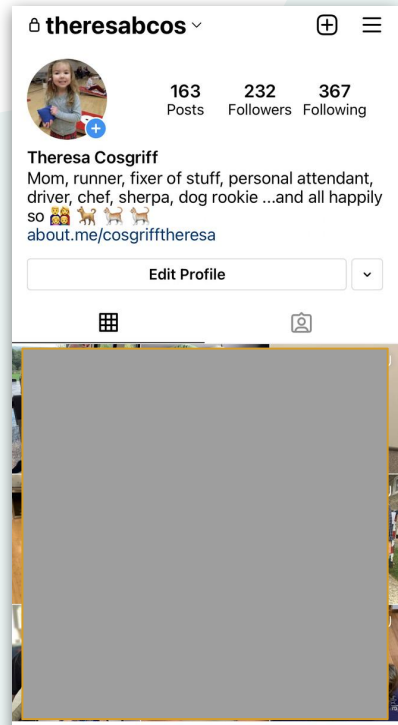
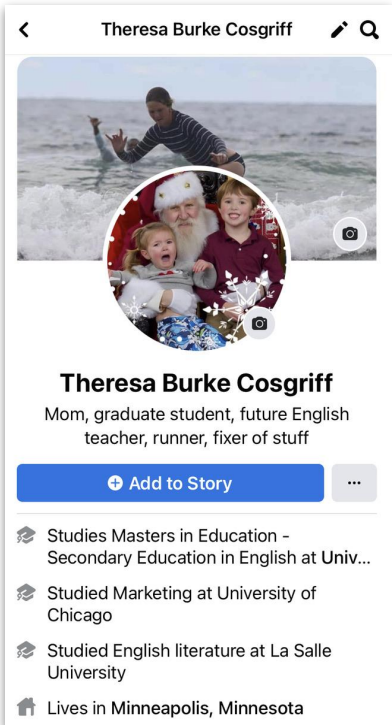
**Nenny**

**Marin**

**Sally**



**What goes into a social media profile?**



## CHARACTER ASSIGNMENTS AND SOURCES

**Esperanza**

PP. 43-44, 53-55

**Nenny**

PP. 17-20

**Marin**

PP. 26-27

**Sally**

PP. 81-83





## LET'S DISCUSS

**How did your choice of social media enhance or limit your ability to showcase that character's identity(ies)?**



## **Tonight...**

- **Read pages 84-93 (five vignettes)**
- **Prepare for tomorrow's discussion and continued profile work**